



IMPACT REPORT — 2020



JOHANNESBURG
GLOBAL SHAPERS
WWW.GLOBALSHAPERS.JOBURG



BUILDING A MOVEMENT THROUGH YOUTH

Born out of the World Economic Forum, the Global Shapers Community is a network of inspiring young people under the age of 30 working together to address local, regional, and global challenges. With more than 13,000 members, the Global Shapers Community spans 430 city-based hubs in 149 countries.



Page of contents

We believe in a world where young people are central to the solutions of their communities, by building a better society, effective policy making and creating lasting change.

Curators' Letter	04	Project Triangle	12
Meet the Shapers	06	Project Highlights	14
Why do we Shape?	10	Davos Labs	23
How do we Shape?	11	Better Together	25

CURATORSHIP LETTER

A term like no other. A true moment of reflection and a privilege indeed.



IMPACT

Through our project triangle, we hope to provide you with a guide on the intersectionality across our grass-roots, dialogues, and policy projects which inform the implementation and track the progress of our various projects from inception to implementation. By tracking and monitoring our progress in this manner, we aim to have an impact-led strategy, which our communities can duly benefit from.

THE CHALLENGE

The 2020/21 curatorship year has undoubtedly been a year like no other. A true moment of both reckoning and reflection that has forced all of us to look at our internal compass, and ask difficult yet necessary questions about what meaningful impact in the middle of the worst recorded pandemic in human history looks like.

If we consider the Johannesburg Hub as a microcosm of the communities in which we serve, we can admit that the COVID-19 pandemic tested and challenged us in many ways, but it has also proven our collective perseverance in the face of profound adversity.

As we embraced virtual ways of engagement, to find innovative and interesting ways of collaboration whilst maintaining the continuity of our existing projects, we quickly had to pivot and find quick-responses to the immediate needs of our communities, all whilst dealing with the fragility of our humanness. Admittedly, this required us to elevate ourselves outside of our immediate self-interests, and made us ask the uncomfortable questions about our privilege and how we can use it to drive meaningful change.



Whether this is done by rolling up our sleeves, creating safe spaces for dialogues to take place or influencing policy through our strategic partnerships, we know that history will judge us badly if we don't do work that matters and serves the interests of our communities.

For us, the true privilege of being part of this community during this period was to come to a common understanding of our collective humanity. This valiant call to service, while adapting to our new normal, meant that the Hub was able to challenge the status quo and ask difficult questions

We hope that in the next few pages, you will understand how the past year has allowed us to take a step back and reflect on how we measure the success of our projects.

Yours in service,

Curator: Palesa Vuyolwethu Tshandu

Vice-Curator: Dhiren Govender



REFLECT. ENGAGE.

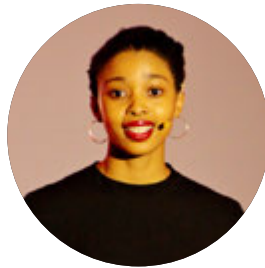
We needed to get the hub back to making meaningful change in our community

Meet the Shapers

Our team of extraordinary Global Shapers are what make the Johannesburg hub such a vibrant, impactful community. Through the efforts, ideas and networks of our hub we are able to make a difference in the world.



Benjamin Molefe



Cassandra Moodley



James de Villiers



Jaun Pienaar



Kirra Evans



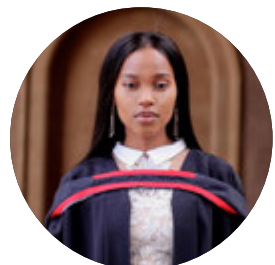
Lamis Essop



Liz Letsoalo



Ludwick Marishane



Luyanda Ngongoma



Marcello Schermer



Maximillan Khoza



Penelope Gregoriou



Dhiren Govender



Nomhle Ngwenya



Palesa Tshandu



Priscilla Menoe



Saieshan Govinder



Sihlesenkosi Majola



Thato Mabudusha



Thoba Grenville-Grey



Mbali Motsoeneng



Lisa Mavundla



Kolawole Olajide



Jovana Korac



Khethi Ngwenya



Kirigo Kamore



Mandy Benjamin



Layani Khoza



Thando Gumede



Sibusiso Khumalo



Oliver Guzi



Philani Mzila



David Fu

Johannesburg is a city characterised by contradiction, it is a combination of the world-class African city it is often hailed for, while many in it still suffer from poor basic service delivery.



Why do we shape?

2020.... The roaring twenties didn't begin in the way that we had hoped or expected.



The year that has been was one of the most collectively chaotic, uncertain and frightening periods that we have witnessed and experienced. While so much was up in the air, it gave us perspective on some of the most important things in our personal lives, and in our lives as citizens of South Africa. Unfortunately, the pandemic highlighted inequalities and human rights abuses that persist to be interwoven into the fabric of our society.

Being a Global Shaper starts from a place of service - to our community and the people in it. But why do we Shape? We Shape for our beloved city of Johannesburg and its amazing people. This incomparable city, with its many flaws and even more wonders. Johannesburg is a city characterised by contradiction, as it is a combination of the world-class African city it is often hailed for, while many in it still suffer from poor basic service delivery.

Youth unemployment, inadequate access to education, and polarising inequality are just some of the issues that cripple the city and serve as an obstacle to it reaching the full potential we know it can reach. We Shape because we believe we can help our communities overcome some of the obstacles we are faced with by being a catalyst for the change we want to see.

2020 was a year that seemed to collapse on itself, and it reinforced our urgency to rebuild our community in whatever way we can, brick by brick.

5 926 668

Johannesburg's 2021 population is now estimated at almost 6 million residents and grows around 3% annually.

330 000

More than 330 000 (20%+) people live in informal dwellings in the city of Johannesburg.

3.5%

3.5% of people who live in Johannesburg are living beneath the poverty line.

* Source: Financial Times (ft.com)

How do we shape?

■ The Global Shapers Community is a network of young people driving dialogue, action and change around the world.



PROJECT TRIANGLE

The Project Triangle was developed to encapsulate the three main areas of project interest. We propose that the lifecycle of a single project should have co-leads that touch on each area of interest: Grassroots Action, Dialogues (strategic) and Policy.

BACKGROUND

During the 2020/2021 term, our curators conducted an internal hub survey, assessing the areas of project interest within our hub. What came out of the survey were three distinct areas the Johannesburg Hub felt we could lead in, namely: Policy, Strategic Projects and Grassroots Projects.

After a year of being disconnected during the pandemic, differences in project style added to further disconnection within the hub. The incoming curatorship was tasked with realigning the hub, and used a data-driven approach to create a project model that sought to reconnect the hub.

The project triangle is an opportunity for the Johannesburg Hub to work together cohesively. For any single project, we could potentially have three co-leads, each leading in one of the areas of the triangle. This fosters a collaborative culture within our hub, but also has interesting implications for project impact, as we focus on diverse ways to tackle an issue.

Grassroots Action 01

Grassroots Action fosters immediate, short-term and direct impact to communities. This helps alleviate immediate needs. Here, we aim to foster local partnerships with communities, community leaders and other stakeholders (e.g. schools, local NGOs, clinics etc). In our pilot project, our grassroots action looks at planting a vegetable garden to combat issues of food security and nutrition in the Moletsane community in Soweto.

Dialogue 02

Dialogues form part of our strategic projects. At this stage, our aim is to onboard sponsors and high level partners by leveraging the WEF brand and communicating the needs of the community. Dialogues allow us to host events, like "Meet the Leader" where we can explore themes like food security on a broader scale, with private sector sponsors and relevant institutional partners (e.g. World Food Programme). Medium-term impact will be created by the partnerships we facilitate.

Policy 03

Policy is the final project point, where we effectively shape on a particular issue. With the insights gained from the community as well as from our dialogues, our Policy project leads will draft policy recommendations, resolution documents and provide constructive commentary to relevant governing institutions, outlining the Johannesburg youth perspective. Lobbying the government for policy changes that are informed by firsthand community experience will allow for long term impact.

Pilot Project

The Johannesburg Hub is piloting the Project Triangle with a vegetable garden project at Moletsane Secondary, a high school in Soweto.



The Johannesburg Hub is excited to shape our community. We're dedicated to the call to uplift, empower and better the people of our city. Our aim is to reconnect, collaborate within our hub and outside of it, and grow our impact both locally and regionally.

Our collaborative project triangle works in the following way:

Grassroots Action

The Johannesburg hub members have assisted with revitalising the garden at Moletsane. We will plant seedlings alongside the community and ensure that the outcome of this project is a thriving vegetable garden, providing seasonal vegetables for sale and nutrition.

Dialogues

We aim to have broader dialogues around issues of food security with key stakeholders. This is where we'll look at the SDGs (e.g. Goal 2, Zero Hunger) and facilitate dialogue between community leaders as well as the institutions working to eradicate these issues (e.g. World Food Programme). Additionally, this strategic project will include onboarding sponsors like the Shoprite Group and institutional partners.

Policy

We will be reviewing the policy frameworks that impact hunger and nutrition including; City of Johannesburg Integrated Development Plan, South African National Development Plan, African Union Agenda 2063, UN Sustainable Development Goals

Through collaborative efforts with communities we partner with, we'll be able to provide deep policy insight and resolution documents to relevant stakeholders within our network.

Project Highlights



COVID-19 Webinars

The Johannesburg Hub, in partnership with other South African hubs, initiated a series of webinars at the beginning of a period that was very foreign to all of us. Together with industry leaders and various bodies, we addressed pertinent subjects in relation to COVID-19 through a series of online dialogues to assist our communities in navigating this uncharted territory we were in and mitigate, as far as possible, the negative impact we were already experiencing at that time. We engaged with organisations such as UNICEF, the Socio-Economic Rights Institute of South Africa (SERI) and the Draper Richards Kaplan Foundation



COVID-19 in the Age of Inequality



COVID-19 and the Informal Economy



COVID-19 and Project Management



The Future of Work



PROJECT LEADS



Saieshan Govinder



Palesa Tshandu



Penelope Gregoriou



Lamis Essop

IMPACT AREAS



COVID-19 Response



Education

Heroes behind the Shields

In addressing the shortage of facemasks for our healthcare workers at the frontline of this pandemic, this project was initiated to address this challenge. In partnership with non-profit organisation RUACH 3D, Alpha Pharm and the wider 3D printing community, the Johannesburg Hub launched a crowdfunding campaign to help produce and distribute 3D printed face shields to healthcare and frontline workers across South Africa.



Through this project, we were able to produce and deliver approximately 5,000 face masks to healthcare and frontline workers who put their lives at risk to fight against the pandemic.

PROJECT LEADS



Saieshan Govinder



Sibusiso Khumalo



Jaun Pienaar

IMPACT AREAS



COVID-19 Response



SDG 3

Mask Distribution

This cross continental project was in response to the urgent need for masks in South Africa as the virus had begun to aggressively spread and as we've come to understand, masks are imperative in curbing the spread of COVID-19.

In May 2020, the Global Shapers Johannesburg Hub partnered with Family Mask in Hong Kong to secure a donation of approximately 2 000 face masks. These face masks were then distributed in early June to vulnerable communities in Gauteng affected by the pandemic.



Arebaokeng Hospice
Tembisa

Laudium Retirement Home
Pretoria

Witkoppen Clinic
Partnership with Tshwane Hub

The collaboration was also featured in Jumpstart Magazine which is a testament of the far-reaching impact that this project had for our beneficiaries and our community.

PROJECT LEADS



Saieshan Govinder



Marcello Schermer



Dhiren Govender

IMPACT AREAS



COVID-19 Response



SDG 3

Financial Literacy Fellowship

The ability to understand and effectively use sound financial principles in our personal lives is a skill that many women do not have. Currently, there is a substantial gender gap in financial inclusion and financial capability. Poor financial decisions that can lead to poor financial wellbeing can have a detrimental impact on a woman's life for many years, and it is a reality that is all too real today. The fellowship was initiated by the Houston Hub and it was a collaborative effort with Hubs from Abuja, Casablanca, Johannesburg, Lagos and Nairobi and it spanned over a period of 6 months (October - March).



Personal financial management plays a significant role in our economic development and mobility, making financial literacy a key skill to have and practice. In acknowledgement of this disparity, this fellowship was created to equip young female university students with sound financial literacy lessons to apply in their own lives. The sessions touched on key financial literacy topics such as how to invest and exploring various investment vehicles, saving and budgeting, how to manage debt, developing good credit history, tax planning, and developing multiple sources of income.

Our Hub maintains communication with some of the students from this fellowship, as we aim to keep in touch with some of the individuals in our community that we're trying to serve and connect with.

PROJECT LEADS

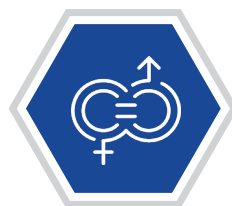
IMPACT AREAS



Penelope Gregoriou



Lamis Essop



Education & Skills
Gender Parity



SDG 8

LGBTQI+ Support Group

In a country where the LGBTQ+ community faces daily threats, be it through overt discrimination or physical abuse, queer individuals often lack a safe space and community that can act as a support network. This was highlighted during South Africa's national lockdown where traditional support networks and institutions were disrupted and had to close in the face of the global pandemic. The current virtual community event, attended by close to 30 participants bi-weekly, provides a safe space where LGBTQ+ individuals can share life experiences, and provide advice for fellow attendees.



The Global Shaper Johannesburg and Tshwane Hubs, in partnership with South Africa's largest mental health line, the South African Depression and Anxiety Group (SADAG), launched a bi-weekly support group at the beginning of August 2020 to provide a sense of community for the marginalised group.

A supplementary WhatsApp group provides a channel for those who do not necessarily have an internet connection to attend virtual community gatherings to also access resources and join the conversations.

PROJECT LEADS

IMPACT AREAS



James de Villiers



Rivonia Pillay
(Tshwane Hub)



LGBTI+ Inclusion
Mental Health



SDG 10

Shaping Fees


Education is a human right, and it is a right that has not been accessible to all South Africans as it should be. The elevated funding structures of higher education in South Africa is a longstanding issue that has proved to be a hurdle for many South African youth to enrol in universities. It is a reflection of the embedded inequality in our society, and is just one of the sectors where it is highly evident.


#FeesMustFall is a student-led movement that was formed in response to this issue in which students from all over South Africa protested against fee hikes and called for the government to increase funding efforts for South African students.


To address this continuous struggle, we have established a fund that is aimed at raising money for high school students in Moletsane High School for the purposes of supporting them financially to get access to tertiary education.


Our long-term goal is to contribute towards poverty eradication by helping students avoid the debt that quality education often creates.

The initial target we are working towards is to raise R50,000. In efforts to reach this target, we have:

Established a GivenGain page and an emergency fees fund 

Lobbied individually before approaching partners 

Partnered with schools and established an incentive scheme 

Partnered with cycling clubs to raise money for sporting events 

PROJECT LEADS



Kirra Evans

IMPACT AREAS



Employment & Education



SDG 1, SDG 8

Vegetable Garden

Food scarcity in South Africa is another area where inequality is highly pronounced and deteriorating food security has been accelerated by the pandemic. Moletsane High School, based in Soweto, have collaborated with local farming company, Nason Foods to set up a vegetable garden for the benefit of the immediate community. We have facilitated this collaboration and worked together with the local community in setting up the garden. We are aiming to create both short and long-term impact with the development of the food garden in our efforts to scale it and equip the members of the community with the adequate skills to manage it.



PROJECT LEADS



Benjamin Molefe

IMPACT AREAS



Equity & Inclusion

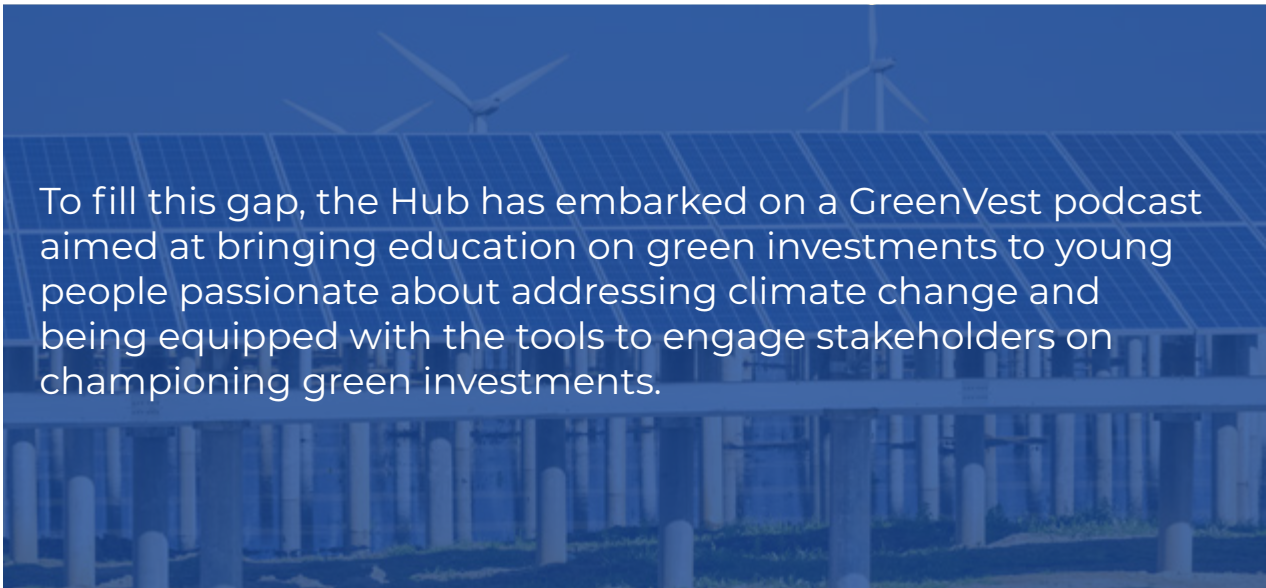


SDG 2, SDG 11

GreenVest Podcast

Climate change is one of the world's biggest challenges and more so for a developing country like South Africa which is already facing some of the impacts caused by climate change, such as the lack of annual rainfall and increasing temperatures creating drought-like conditions. To drive urgent climate action, green investments need to be leveraged to finance key climate and environmental projects in the country. However, it is important that increased efforts go into educating and creating awareness on what green investments are and the importance of financial innovation in addressing climate change.

A lot of science communication for youth has been based on the importance of climate change and its impacts, but there isn't an educational platform and framework on educating youth on what green investments are and how different stakeholders can be engaged to support the financing of the low-carbon transition in the country.



The podcast will be based on defining what green investments are, their importance in financing sustainable climate projects in the country, as well as creating a platform for youth to engage with organisations and asset managers championing green investments in the country.

PROJECT LEADS



Nomhle Ngwenya

IMPACT AREAS



Climate & Environment



SDG 4, SDG 13

Shaping Entrepreneurship

The small business space was not left untouched by the devastation of the pandemic and we acknowledge the support that our local entrepreneurs need.

The World Trade Organisation has released statistics that show that 95% of the world's companies are MSMEs and 60% of the world's employment is provided by MSMEs. If it wasn't already important to support these businesses, these statistics provide an economic case for why more support is needed.

Small businesses are essential economic engines in the South African economy that have not been immune to the financial devastating effects that the COVID-19 pandemic has caused. With this unfortunate reality looming over businesses - small and large - there needs to be a concerted effort to support local start-ups.

This project aims to equip entrepreneurs with entrepreneurial best practices on how to efficiently run and scale their businesses, with online sessions from established South African entrepreneurs and small business experts, while also creating a networking and mentorship circle with the participants in our programme.

Additionally, we understand that resources play a pivotal role in the success of a start-up and therefore, we are looking for partners to collaborate with us to enhance the value-add of this programme.

PROJECT LEADS



Maximilian Khoza



Penelope Gregoriou


IMPACT AREAS



Employment & Education



SDG 4, SDG 8
SDG 9

The background of the slide is a dark, aerial photograph of a city at night, showing numerous illuminated buildings and a complex network of roads. In the bottom right corner, there is a decorative graphic consisting of several overlapping triangles in various shades of blue and white, forming a larger, abstract geometric shape.

The Davos Lab is the world's first grassroots and youth-driven recovery plan. The recovery plan will be showcased at the Special Annual Meeting 2021, which at current pace, will be the world's first in-person meeting of world leaders.

Davos Labs: Building our future

The Global Shapers Community has been mandated by the World Economic Forum to drive a series of dialogues titled the Davos Labs Project.



A world first. A standard for Global Shapers

The Davos Lab is the world's first grassroots and youth-driven recovery plan. The recovery plan will be showcased at the Special Annual Meeting 2021, which at current pace, will be the world's first in-person meeting of world leaders. As part of this project, the Johannesburg Hub hosted two local dialogues under the following themes:

Inclusive Jobs

In collaboration with the International Labour Organisation (ILO), and Proudly South Africa

The Future of Politics

We looked at how we can reimagine policy making, politics and government to engage more citizens, especially women, youth and minorities and/or underrepresented groups. As part of the discussions we considered what the future of politics and the 21st-century politician and policymakers look like and how we encourage new candidates to run for office or become policymakers.

These insights have been synthesized and the views, ideas and concerns of citizens captured via the local dialogues and surveys into a Recovery Plan that can then serve as a roadmap for long-term state and industry planning.

Project Lead: **Liz Letsoalo**



Better together

In our collective quest for undertaking the actions to recover and prepare for our 'new normal', leveraging partnerships to create more meaningful impact has never been more vital.



Throughout our efforts to navigate through the challenges of our communities, we have been exposed to the many strengths and vulnerabilities of our Hub. We are a passionate and committed group, however we acknowledge that our impact reach can be extended with the right strategic partnerships.

This impact report chronicled our response to the urgent needs we were confronted with, and whilst we made a significant effort that made a difference to the lives of our beneficiaries, we recognise that we can create more opportunities and change when working with the right people.

If you would like to support any projects or if we can support you or your organisation to advance and promote your community impact, contact our Impact Officer by [clicking here](#).



Telephone: +27 84 209 4212
E-mail: info@globalshapers.joburg



22 Sloane Street, Bryanston
Johannesburg, 2191